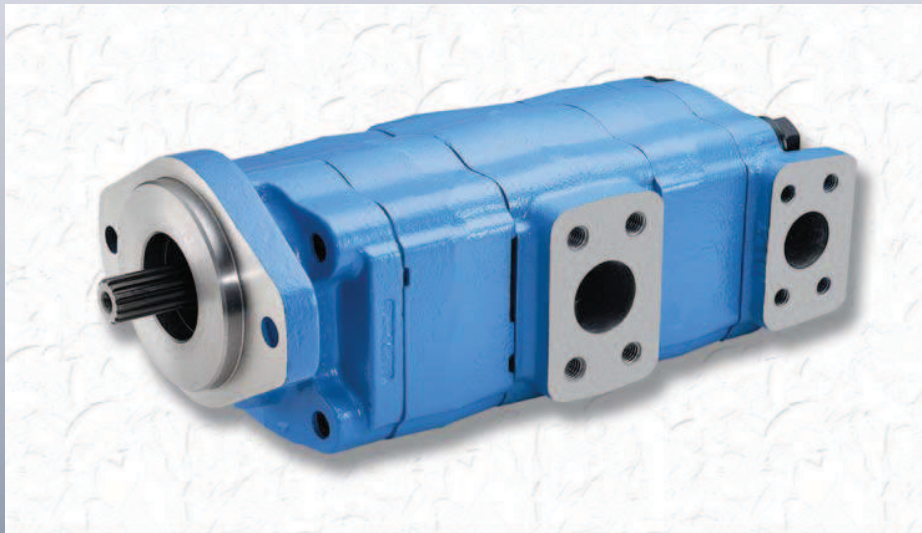




ROLLER BEARING PUMPS AND MOTORS
SLEEVE BUSHING PUMPS AND MOTORS
FLOW DIVIDERS/INTENSIFIERS
ACCESSORIES



For mobile and industrial applications:



- Construction Equipment
- Refuse Equipment
- Mining Machinery
- Agricultural Equipment
- Oil Field Equipment
- Industrial Equipment
- Forestry Equipment






The Sensible Choice



ROLLER BEARING PUMPS AND MOTORS

Specifications

Gear Width

Series		0.50	0.75	1.00	1.25	1.50	1.75	2.00	2.25	2.50	2.75	3.00	
 P2100	2100/3000/3100	GPM/1000 RPM/2000 PSI	**	**	6.5	8.5	11.0	12.5	15.0				
		LPM/1000 RPM	**	**	25	32	42	47	57				
		IN³	1.0	1.5	2.0	2.5	3.0	3.5	4.00				
		CC	16.4	24.6	32.8	41.0	49.2	57.3	65.5				
		*** Max RPM	2400	2400	2400	2400	2400	2400	2400				
		# 2100 - Max PSI	3000	3000	3000	3000	3000	2500	2500				
		# 3100 - Max PSI	3000	3000	3000	3000	3000	2500	2500				
		# 3000 - Max PSI	2500	2500	2500	2500	2500	2250	2250				
		* Motor/Input GPM	**	**	12.0	14.0	16.5	19.0	21.0				
		* Motor/Output in-lbs	**	**	570	730	895	1035	1175				
		* Motor/Output HP	**	**	9.0	11.5	14.0	16.5	18.6				
 P5151	5000/5100/5151	GPM/1000 RPM/2000 PSI	**	**	9.5	12.0	14.5	17.5	19.5	21.0	23.5		
		LPM/1000 RPM	**	**	36	45	55	66	74	79	89		
		IN³	1.29	1.93	2.57	3.22	3.86	4.50	5.15	5.79	6.43		
		CC	21.1	31.6	42.2	52.7	63.2	73.8	84.3	94.9	105.4		
		+ Max RPM	2400	2400	2400	2400	2400	2400	2400	2400	2400		
		5151 - Max Peak PSI	N/A	N/A	N/A	N/A	N/A	3000	3000	3000	3000		
		# 5100 - Max PSI	3000	3000	3000	3000	3000	3000	2500	2500	2500		
		# 5000 - Max PSI	2500	2500	2500	2500	2500	2000	2000	2000	2000		
		* Motor/Input GPM	**	**	13.5	16.5	19.5	23.0	26.0	29.0	32.0		
		* Motor/Output in-lbs	**	**	725	925	1130	1320	1510	1695	1885		
		* Motor/Output HP	**	**	11.5	15.0	18.0	21.0	24.0	27.0	30.0		
 P7500	7500/7600	GPM/1000 RPM/2000 PSI	**	**	14.5	19.0	23.0	27.0	31.0	35.5	39.0	44.0	49.0
		LPM/1000 RPM	**	**	55	72	87	102	117	134	148	167	185
		IN³	2.02	3.03	4.04	5.06	6.07	7.08	8.09	9.1	10.1	11.1	12.1
		CC	33.1	49.7	66.3	82.8	99.4	116.0	132.5	149.1	165.7	182.2	198.8
		Max RPM	2400	2400	2400	2400	2400	2400	2400	2400	2400	2400	2400
		# 7600 - Max PSI	3000	3000	3000	3000	3000	3000	2500	2500	2500	2000	2000
		# 7500 - Max PSI	2500	2500	2500	2500	2500	2500	2500	2250	2250	2000	2000
		* Motor/Input GPM	**	**	23.0	28.0	33.0	37.5	42.0	46.5	51.0	56.0	61.0
		* Motor/Output in-lbs	**	**	1095	1390	1690	1980	2265	2590	2915	3300	3690
		* Motor/Output HP	**	**	17.5	22.0	27.0	31.5	36.0	41.0	46.5	52.5	58.5

*Motor Specifications are given at 1000 RPM and @ 2000 PSI

** Consult Permco on these gear sizes.

*** 2000 RPM Maximum on Motors

The information shown above represents the maximum continuous operating conditions.

+ Maximum 3000 RPM for 5151 series.

SLEEVE BUSHING PUMPS AND MOTORS

Specifications

Gear Width



P124

Series		0.50	0.75	1.00	1.25	1.50	1.75	2.00	2.25	2.50
124	GPM/1000 RPM/Rated PSI	2.0	3.5	5.0	6.0	7.5	9.0	10.0		
	LPM/1000 RPM	8	13	19	23	28	34	38		
	IN ³	0.62	0.93	1.24	1.55	1.86	2.17	2.48		
	CC	10	15	20	25	30	35	40		
	Max RPM	3000	3000	3000	3000	3000	3000	3000		
	# Max PSI	3500	3500	3500	3500	3300	2900	2500		
	# Max Bar	241	241	241	241	227	200	172		
	* Motor/Input GPM	**	**	8.0	9.0	10.5	12.0	13.5		
	* Motor/Output in-lbs	**	**	660	825	930	955	945		
	* Motor/Output HP	**	**	10.5	13.0	15.0	15.0	15.0		



P197 Tandem

P197	GPM/1000 RPM/Rated PSI	**	**	7.0	9.0	11.0	13.0	15.0		
	LPM/1000 RPM	**	**	26	34	42	49	57		
	IN ³	0.99	1.48	1.97	2.46	2.96	3.45	3.94		
	CC	16.1	24.2	32.3	40.4	48.4	56.5	64.6		
	Max RPM	2400	2400	2400	2400	2400	2400	2400		
	# Max PSI	**	**	4000	4000	3750	3500	3250		
	# Max Bar	**	**	276	276	259	241	224		



M257

257	GPM/1000 RPM/Rated PSI	**	**	9.0	12.0	14.5	17.0	19.5	22	25
	LPM/1000 RPM	**	**	34	45	55	64	74	83	95
	IN ³	1.29	1.93	2.57	3.21	3.86	4.50	5.14	5.78	6.43
	CC	21.1	31.6	42.1	52.6	63.2	73.7	84.2	94.8	105.3
	Max RPM	2400	2400	2400	2400	2400	2400	2400	2400	2400
	# Max PSI	4500	4500	4500	4500	3500	3250	3000	2750	2500
	# Max Bar	310	310	310	310	241	224	207	190	172
	+ Motor/Input GPM	**	**	14.5	17.5	20.5	23.5	26.0	29.5	31.5
	+ Motor/Output in-lbs	**	**	1250	1600	1950	2150	2250	2350	2350
	+ Motor/Output HP	**	**	19.5	25.5	31.0	34.0	36.0	37.5	37.5



P360 Tandem

360	GPM/1000 RPM/Rated PSI	**	**	12.7	16.5	20.4	24.2	28.1	31.9	35.8
	LPM/1000 RPM	**	**	48.8	63.3	77.7	92	106.6	121	135.5
	IN ³	1.80	2.70	3.60	4.50	5.40	6.30	7.20	8.10	9.00
	CC	29.5	44.2	59.0	73.8	88.5	103.3	118.0	132.8	147.5
	Max RPM	2400	2400	2400	2400	2400	2400	2400	2400	2400
	# Max PSI	3500	3500	3500	3500	3500	3500	3500	3250	3000
	# Max Bar	241	241	241	241	241	241	241	224	207

*These motor specifications are given at 1000 RPM @ rated PSI.

** Consult Permco on these gear sizes.

#The information shown above represents the maximum continuous operating conditions.

+These motor specifications are given at 1000 RPM @ 3000 PSI for 1", 1.5", 1.75", and 2"; @ 2750 PSI for 2.25"; and @ 2500 PSI for 2.5"